



[www.sydwalt.co.za](http://www.sydwalt.co.za)



**SYDWALT**

COMPANY PROFILE





# ABOUT US

---

Sydwalt (Pty) Ltd is a 100% black-owned engineering consulting firm geographically located in the provinces of Gauteng and KwaZulu Natal and offers a broad range of professional services.

From specializing in just architecture to a full-fledged multidisciplinary consulting firm, our professional portfolio has grown exponentially over the years, building on in-depth technical know-how in fields such as architectural, mechanical, electrical, civil, and structural engineering; project and configuration management.

However, the advancement of our expertise continues to grow year on year, through our commitment to constantly develop our in-house skills and knowledge that address and enhance the quality of life through community engrossed projects.

Municipal water pressure logging, underground service detection, soil resistivity, and cathodic protection are just a few exemplary extensions of our capabilities.

Proactive rather than reactive, we deliver results against all odds and external challenges, through the help of reliable partnerships, advantageous associations, and the ability to adapt to new challenges.



# MISSION VISION AND VALUES

---

## OUR VISION.

To become the preferred one-stop engineering solution company in Southern Africa.

---

## OUR MISSION.

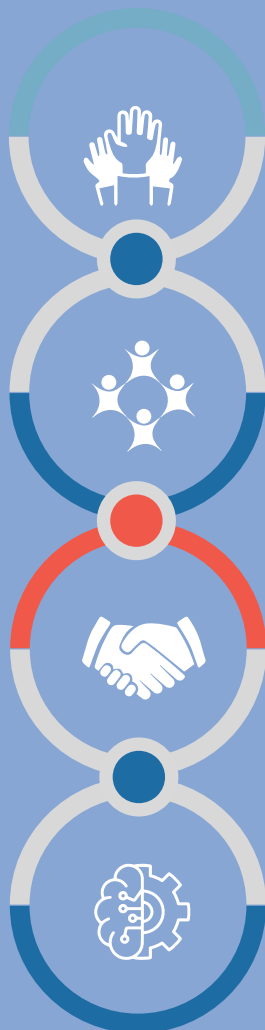
We seek to offer our clients creative and professional services through sound engineering principles.

---

## OUR VALUES.

Our values are driven by our desire to succeed in all that we do:

- *ACCOUNTABILITY.*  
Responsibility for our actions that influence the lives of our customers and fellow workers.
  - *COLLABORATION.*  
Collaborating within and outside the company to give the best.
  - *COMMITMENT.*  
Commitment to roll great product, service and other initiatives that impact live both within and outside the organization.
  - *COMMUNITY.*  
A sense of responsibility and contribution to society that define our existence.
  - *EFFICIENCY.*  
Being efficient and effective in our approach to give best solution each time.
- 







## DIRECTORS FOREWORD

---

Sustainable basic services are critical to the prosperity and sound economic development of any country. Without basic services like water, electricity, housing, roads, etc; no economic activity can flourish. In our professional practice as engineers, we became aware of the scarcity of a consolidated basic services approach. One that brings together in synergy the multiply engineering fields in harmony like:

- Project Management
- Mechanical Engineering
- Electrical Engineering
- Civil & Structural Engineering
- Architectural Engineering
- Quantity Surveying
- Town Planning
- Land Surveying
- Configuration Management

Thus, in 2005, Sydwalt (Pty) Ltd was founded to provide such specialists with the adequate opportunity to apply their know-how in the development and service of our country. Based on the principles we have adopted, and on the support and appreciation we have so far, we are fully confident that our organization will continue to develop and grow to enable us to achieve our international professional aspirations.



# SERVICE OFFERING

THE SERVICES COVER A WIDE RANGE OF ACTIVITIES AND INCLUDE:

## CIVIL & STRUCTURAL ROADS AND TRANSPORT SERVICES

- Roads Projects and Construction Management
- Appraisals Analysis Evaluation
- Airport Design and Maintenance
- Pavement Materials and Geo-tech Investigations
- Traffic and Transport Engineering
- Road Maintenance Management Systems
- Building Construction
- Drilling of Geological Boreholes Studies
- Water Infrastructure Services
  - Feasibility Studies & Business Plans
  - Design & Construction Monitoring, until project Close-Out
  - Bulk Water Supply & Ground Water Development
  - Water Conservation/ Demand Management

## MECHANICAL ENGINEERING

- Piping & Pressure Vessels Design,
- Hydrological Analysis
- Tanks (Software – Intergraph tank)
- Heat Exchanger and Pressure Vessel ( Software – Code ware Compress or PV Elite)
- Pump Design
- Equipment Re-Rating
- HVAC System Design

## A/ELECTRICAL ENGINEERING

- Bulk Electrical Infrastructure
- Design for Electrification
- Energy Efficiency Projects
- Uninterrupted Back-up Power Systems
- Advanced Metering Infrastructure
- Network Development Plans

## ARCHITECTURAL ENGINEERING

- Architectural Drawings
- High-Quality Residential, Commercial, and Industrial Design
- 3D Modelling and Rendering

## CONFIGURATION MANAGEMENT

- Document Management
- Expansion Projects
- New Build Projects

## PROJECT MANAGEMENT

- Specialized Projects

## WATER AND SANITATION

- Boreholes
- Design & Build of Water Treatment Plants

## QUANTITY SURVEYING

- Project Brief - Project Cost Estimate
- Concept & Viability – Cost-benefit analysis
- Design & Development - Preparation of Bill of Quantities
- Documentation & Procurement - Tender Document
- Construction - Cost Management controls and Valuations
- Close Out - Final Accounts

## TOWN PLANNING

- Township Establishment
- Feasibility Study
- Rezoning
- Subdivision/ Consolidation
- Land Audit
- Spatial Development Framework
- Development of Principal Plan
- Consent Use

## PIPING SERVICES

- Piping Design as per ASME, MS, EN Design Code or as per Client Specification & Isometric Production (AutoCAD Software)
- Piping Stress Analysis ( CAESAR II Software)
- Design Review and Verification of Pressure Components as per SANS 347
- As-built Isometric & MFD Drawing on Existing Plant
- Drafting Services from sketches to proper Drawing.







# PROJECT PORTFOLIO

<b>PROJECTS</b>					
<b>Area of Specialization</b>	<b>Yes /No</b>	<b>Project Duration</b>	<b>Client</b>	<b>Project Name</b>	<b>Details of Involvement</b>
<b>Schools</b>	Yes	1 Year	DBSA	KZN DOE Infrastructure Development & Maintenance	Assessment, Design & Project Management
			NECT	KZN Safe Program	Assessment, Design & Project Management
	Yes	1 Year	Gauteng Department of Infrastructure Development	Quantity Surveying & Mechanical Engineering services at Carleton Jones High School	Design Development
	Yes	4 Years	Mnambithi FET College	Mnambithi FET College Design of Central Office, Ladysmith Campus, development of Office Space, Renovations to Ladysmith Campus, Ezakheni Student Residence	Design, Costing & Project Management
	Yes	2 Years	Mnambithi FET College	Boundary wall Ezakheni Phase 2	Design, Costing & Project Management
				Estcourt boundary wall	Design, Costing & Project Management
				Ladysmith campus A boundary	Design, Costing & Project Management



				Remedial works to Ezakheni A campus building	Design, Costing & Project Management
				Boundary wall Ladysmith campus B	Design, Costing & Project Management
				Boundary wall Ezakheni Phase 3	Design, Costing & Project Management
	Yes	1 Year	Gauteng Province Infrastructure Development	Freeway Park Primary School	Construction Project Management, Planning, Costing, and Implementation
	Yes	3 Years	PURCO Purchasing Consortium Southern africa	North-West University (Mahikeng, Potchersroom, and Vanderbijlpark Campuses)	Professional Service Provider in Electrical and Mechanical disciplines
<b>Roads</b>	Yes	2 Years	Newcastle Local Municipality	OBI Link Road	Design development & Project Management
	Yes	6 Years	Indaka Local Municipality	Rehabilitation of Umgejakazi Road Project	Design, Costing, Project Management
				Ilenge Road Project	Design, Costing, Project Management
				Waayhoek Road Project	Design, Costing, Project Management
				Limehill Road Project	Design, Costing, Project Management
				Inkinga Road Project	Design, Costing, Project Management
				Izihlabathi Roads Projects	Design, Costing, Project Management
	Yes	1 Year	Johannesburg Roads Agency	Bid Compilation and Evaluation	Technical Advice
Yes	2 Years	Newcastle Local Municipality	MF55 Roads & Stormwater	Design development & Project Management	
<b>Storm-Water</b>	Yes	1.5 Years	Newcastle Local Municipality	Roypoint Development – Roads Storm-water	Business Plan
	yes	1 Year	Alfred Duma Local Municipality	Uitval Gravel Road	Business Plan
<b>Bulk Sewerage</b>	Yes	1.5 Years	Newcastle Local Municipality	RoyPoint Development Bulk Sewerage and Upgrade WWTW	Business Plan
<b>Non-Revenue Water (NRV)</b>	Yes	1.5 Years	Newcastle Local Municipality	Newcastle West WC/WDM	Feasibility Study and Implementation
<b>Underground Water/Boreholes</b>	Yes	3 Years	Uthukela District Municipality	Springs Protection and Appurtenant Works	Business Plan, Design, Costing, Project Management
		1 Year	Umkhanyakude District Municipality	WSIG Municipal Infrastructure and Building Projects	Business Plan, Design, Costing, Project Management
	Yes	1 Year	Uthukela District Municipality	Compilation of Underground Water Source Master Plan	Feasibility Study





	Yes	2 Years	Uthukela District Municipality	Drilling of Production Boreholes Supply & Installation of Hand Pumps, Pipelines for the District-wide	Feasibility, Design Development & Implementation Turnkey (drought Related)
<b>Bulk Water/Water Treatment</b>	Yes	1 Year	Uthukela District Municipality	Dukuza Community Water Supply Scheme	Design, Costing, Project Implementation (Turnkey)
				Hand Pumps	Drilling of Production Boreholes
				Water Source Infrastructure Business Plan	Springs Protection, Boreholes, Bulk & Reticulation
<b>Town Planning</b>	Yes	1 Year	Msinga Municipality	Msinga Land Use Management Scheme (LUMS)	Status quo, develop land management framework, draft scheme maps and clauses, public consultation, scheme & TSMP, the Adoption process
	Yes	1 Year	City of Tshwane	Subdivision of 27 churches	Subdivision of 27 properties in line with the City of Tshwane Town Planning scheme and Land use management by-laws
<b>Smart Metering Infrastructure</b>	Yes	2 Years	Newcastle Local Municipality	Installation of Smart Water & Electricity Meters	Feasibility, Design development & Implementation
<b>Electrification</b>	Yes	1 Year	City of Tshwane	Electrical Professional Services for the Execution and Construction Management of the Wonderboom Emergency Service Station	Construction Management
	Yes	3 Years	Okhahlamba Local Municipality	Electrification Project	Service Provider
	Yes	2 Years	Newcastle Local Municipality	Electrification Projects	Amajuba
					Ingogo Phase 2
					Inkwelo Phase 2
					KwaJuba
	Yes	1 Year	Newcastle Local Municipality	Roypoint Development and Bosworth Farm	Business Plan
Yes	2 Years	Newcastle Local Municipality	Electrification	Charlestown	
				Normadien 1	
				Normadien 2	
<b>Community Facilities</b>	Yes	2 Years	Alfred Duma Local Municipality	Construction of Kwahlathi & Nazareth Sportsfield	Business Plan, Design, Costing & Project Management
	Yes	4 Years	Umtshezi Local Municipality	Design and Construction Management of Taxi Rank	Design, Costing, Project Management
				Design and Construction Multi-Purpose Centre	Design, Costing, Project Management





	Yes	2 Years	Okhahlamba Local Municipality	Construction of Ndunwana Community Hall and Creche	Business Plan, Design, Costing, Project Management
<b>Bulk Water &amp; Reticulation</b>	Yes	1 Year	Newcastle Local Municipality	Madadeni Water Supply Extension & Upgrade; Retrofgggggg High Lying Areas	Design, Costing, Project Management
	Yes	1 Year	Mnambithi TVET College	Ezakhgeni Student Residence Water Storage and Reticulation Network	Feasibility, Design and Project Management
<b>Other – Power Station Construction</b>	Yes	1 Year	Eskom Capital Projects	Configuration Management Services for Kusile Power Station	Technical Advice
		1 Year	Eskom Capital Projects	Eskom Megawatt	Configuration Management
		1 Year	Eskom Capital Projects	Eskom Center of Excellence	Technical Advice
<b>Underground Services Detection</b>	Yes	1 Year	Impande Consulting Engineers	Underground Services Detection Kokstaad, Underberg	Technical Advice
<b>Municipal Water Pressure Logging</b>	Yes	2 Years	Impande Consulting Engineers	Ethekwini Water Logging	Technical Advice





# PROFESSIONAL MEMBERSHIP

---

## COMPANY MEMBERSHIP

Our company is registered as a member with Consulting Engineers South Africa (CESA)

Our Quality Management System (QMS), complies with the international ISO 9001:2015 standard

We registered with the South African National Energy Development Institute (Sanedi) ESCO TIER 1 Certification

## KEY PERSONNEL PROFESSIONAL MEMBERSHIP

Our multi-disciplinary team of highly competent and experienced professionals is registered with the professional regulatory bodies Mechanical, Civil, and Electrical Engineering professionals are professionally registered with the Engineering Council of South Africa (ECSA)

Architect professionals (Pr. Arch) are professionally registered with The South

African Council for the Architectural Profession (SACAP)

Quantity Surveyor professionals (Pr. QS) are professionally registered with The South African Council for the Quantity Surveying Profession (SACQSP)

Project Management professionals (Pr. CPM & Pr. CM) are professionally registered with The South African Council for the Architectural Profession (SACPCMP)

Town Planners professionals (Pr. Pln) are professionally registered with The South African Council for Planners (SACPLAN)

Professional Land Surveyors (Pr. LS) are professionally registered with The South African Geomatics Council (SAGC) / The South African Council for Professional and Technical Surveyors Geologist Professionals (Pr. Natural Scientist) are professionals registered with the South African Council for Natural Scientific Professions





# SOCIAL RESPONSIBILITY

---

We are extremely passionate about our company's social responsibilities and believe it is our patriotic duty to leave a lasting difference by improving the lives of the various communities we work in, through job creation, training, and transferring of skills.

## **INITIATIVES:**

1. Girls Sanitary Packages for girls in High School
2. Human settlement: House Donation
3. Science week for learners in High School
4. Work readiness program/Apprentice
5. In-service training
6. Internship Programme

These efforts of evolving people, we believe, are a significant contribution to a greater call to combat the high unemployment rate of our country and continent at large.

We also realize that much more effort needs to be done as a nation to alleviate the challenges we face today, and thus intend to identify more areas of concern that resonate with us as a company, that we hope to undertake in the near future.



SYDWALT

Tel: (010) 442 4795  
Email: [info@sydwalt.co.za](mailto:info@sydwalt.co.za)  
[www.sydwalt.co.za](http://www.sydwalt.co.za)

Head Office:  
2 Morris St West,  
Woodmead Ext 1,  
JHB 2191  
P.O. Box 201, Carlswald,  
1684